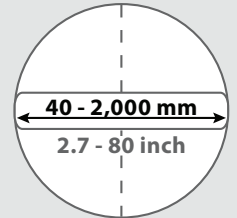


Test Sealing Bags

The inspectors.



- › flexible and sturdy design
- › only 3 sizes from 100 - 1,000 mm
- › for tests according to DIN EN 1610
- › lighter than test bags with inside core

Vetter Test Sealing Bags fulfil three functions in one: seal, test with water or air and reroute / divert.

The flexible (internal hoses – no internal tube) and sturdy construction enable easy matching of the test bag to the different pipe materials. Small amounts of unevenness can also be compensated.

The areas of operation are, among others:

- › Rerouting drainage when leaking occurs
- › Banking up and dosed diversion of liquids
- › Sealing tests according to DIN EN 1610 with air or water
- › Control of the pipeline sections

The test bags are fitted with (an) inflation coupling(s) and tension lugs. The outside threaded connections of the inlets enable a free selection of accessories. The size of the connection depends on the type of bag.



Technical Data

Test Sealing Bags		Pipe diameter mm / inch	Diameter mm / inch	Cylinder length mm / inch	Total length mm / inch	Air requirement litres / cu.ft.	Weight, approx. kg / lbs
PDK 4/7 FLEX 1441000701 2 x 4 mm	2.5 bar (36.25 psi)	40 - 70 1.6 - 2.8	37 2.7	155 6.1	250 9.8	3.5 0.12	0.4 0.88
PDK 7/15 FLEX 1441001201 1 x 1/2" OT	2.5 bar (36.25 psi)	70 - 150 2.8 - 6	68 2.7	350 13.7	395 15.4	14 0.5	1.7 3.8
PDK 10/20 FLEX 1441018501 1 x 1" OT	2.5 bar (36.25 psi)	100 - 200 4 - 8	90 3.5	510 20	555 21.9	40.3 1.4	2.0 4.4
PDK 15/30 FLEX 1441022700 2 x 1/2" OT 1441022800 1 x 2" OT	2.5 bar (36.25 psi)	150 - 300 6 - 12	145 5.7	460 18.1	505 20	87.5 3.1	5.8 13.8
PDK 20/40 FLEX 1441040300 2 x 1" OT 1441018600 1 x 2" OT	2.5 bar (36.25 psi)	200 - 400 8 - 16	195 7.7	640 25	685 26.7	225 7.9	8.6 19.0
PDK 20/50 FLEX 1441031100 2 x 1" OT 1441031200 1 x 2" OT	2.5 bar (36.25 psi)	200 - 500 8 - 20	195 7.7	750 29.3	795 31	237 - 333 8.37 - 11.8	7 - 9 15.4 - 19.8
PDK 30/60 FLEX 1441023100 2 x 1" OT 1441018701 1 x 2" OT	2.5 bar (36.25 psi)	300 - 600 12 - 24	295 11.6	735 28.9	815 32.1	454 - 471 16.03 - 16.6	11 - 12 24.3 - 26.5
PDK 50/80 FLEX 1441003900 1 x 2" OT 1441003800 2 x 2" OT	2.5 bar (36.25 psi)	500 - 800 20 - 32	450 17.7	1,110 43.7	1,155 45.6	2,065 - 2,135 72.9 - 75.4	27 - 36 59.5 - 79.4
PDK 60/100 FLEX 1441023200 1 x 2" OT 1441023300 2 x 2" OT	2.5 bar (36.25 psi)	600 - 1,000 24 - 40	580 22.8	1,320 52	1,365 53.7	2,613 - 2,648 92.3 - 93.5	35 - 42 77.2 - 92.6
PDK 50/100 FLEX 1481003501 1 x 2" OT 1481023800 2 x 2" OT	1.5 bar (21.75 psi)	500 - 1,000 20 - 40	450 17.7	1,110 43.7	1,155 45.6	1,475 - 1,525 52.1 - 53.8	27 - 36 59.5 - 79.4
PDK 60/120 FLEX 1481009501 1 x 2" OT 1481009301 2 x 2" OT	1.5 bar (21.75 psi)	600 - 1,200 24 - 48	580 22.8	1,320 52	1,365 53.7	2,425 - 2,450 85.6 - 86.5	35 - 42 77.2 - 92.6
PDK 80/140 FLEX 1481024000 1 x 2" OT 1481023900 2 x 2" OT	1.5 bar (21.75 psi)	800 - 1,400 32 - 56	785 30.9	1,810 71.3	1,855 73	3,075 - 3,100 108.5 - 109.4	55 - 69 121.3 - 152.2
PDK 140/170 FLEX 1401000400 1 x 2" OT 1401000300 2 x 2" OT	0.5 bar (7.25 psi)	1,400 - 1,700 56 - 67	1,350 53.2	1,900 74.8	2,150 84.7	8,670 - 8,685 306.1 - 306.6	62.5 - 70 137.8 - 154.4
PDK 170/200 FLEX 1401000700 1 x 2" OT 1401000600 2 x 2" OT	0.5 bar (7.25 psi)	1,700 - 2,000 67 - 80	1,620 63.8	1,900 74.8	2,300 90.6	8,775 - 8,888 309.8 - 313.8	64.5 - 70 142.2 - 154.4

PDK 2.5 bar - Test counter-pressure 10 m WC (14.5 psi)

PDK 1.5 bar - Test counter-pressure 5 m WC (7.25 psi)

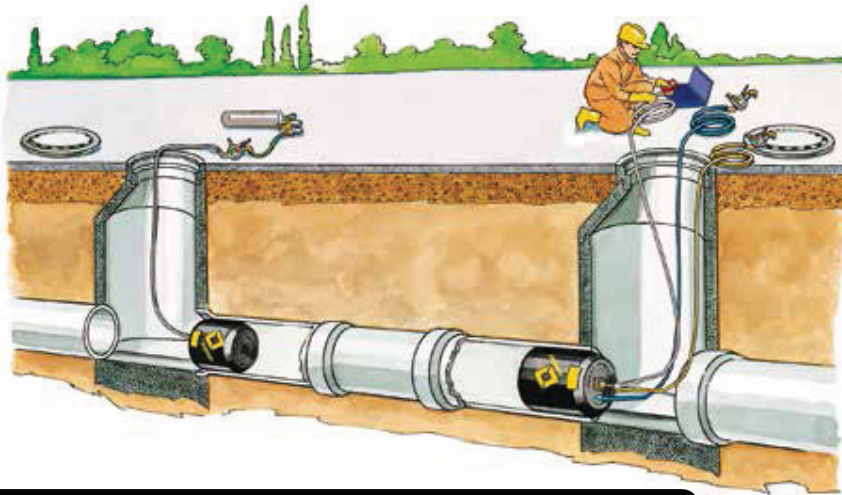
PDK 0.5 bar - Test counter-pressure 2 m WC (2.9 psi)

With 1 RDK and 1 PDK with 2 openings the compressed air testing as well as the water pressure testing can be carried out. No second PDK is necessary!

Compressed air testing - Round profile

Sets 2.5 bar (36.25 psi)

For pipes 70 - 1,000 mm (2.7 - 40 inch)			70 - 150	100 - 200	150 - 300	200 - 400	200 - 500	300 - 600	500 - 800	600 - 1.000
RDK 7/15	1440000301	2.5 bar (36.25 psi)	1							
PDK 7/15 FLEX with duct 1 x 1/2" OT	1441001201	2.5 bar (36.25 psi)	1							
RDK 10/20	1440011700	2.5 bar (36.25 psi)		1						
PDK 10/20 with duct 1 x 1" OT	1441018501	2.5 bar (36.25 psi)		1						
RDK 15/30	1440000601	2.5 bar (36.25 psi)			1					
PDK 15/30 with duct 1 x 2" OT	1441022800	2.5 bar (36.25 psi)			1					
RDK 20/40	1440020100	2.5 bar (36.25 psi)				1				
PDK 20/40 with duct 1 x 2" OT	1441018600	2.5 bar (36.25 psi)				1				
RDK 20/50	1440016700	2.5 bar (36.25 psi)					1			
PDK 20/50 with duct 1 x 2" OT	1441031200	2.5 bar (36.25 psi)					1			
RDK 30/60	1440000801	2.5 bar (36.25 psi)						1		
PDK 30/60 with duct 1 x 2" OT	1441018701	2.5 bar (36.25 psi)						1		
RDK 50/80	1440020000	2.5 bar (36.25 psi)							1	
PDK 50/80 with duct 1 x 2" OT	1441003900	2.5 bar (36.25 psi)							1	
RDK 60/100	1440011900	2.5 bar (36.25 psi)								1
PDK 60/100 with duct 1 x 2" OT	1441023200	2.5 bar (36.25 psi)								1
Compressed air adapter										
Comp. air adapter 1/2" IT	1481023600		1							
Comp. air adapter 1" IT	1481023500			1						
Comp. air adapter 2" IT	1481023400				1	1	1	1	1	1
Accessories for inflation										
Inflation hose, 10 m (32 ft.), yellow	1600029900	2.5 bar (36.25 psi)	2	2	2	2	2	2	2	2
Single fitting controller	0250005701	2.5 bar (36.25 psi)	1	1	1	1	1	1	1	1
Additional accessories as an option										
Inflation and safety hose 10 m (32 ft.), yellow	1700009001	0,3 bar (4.35 psi)	1	1	1	1	1	1	1	1
Measurement hose 10 m (32 ft.) (self-monitoring)	1700010301	0,3 bar (4.35 psi)	1	1	1	1	1	1	1	1



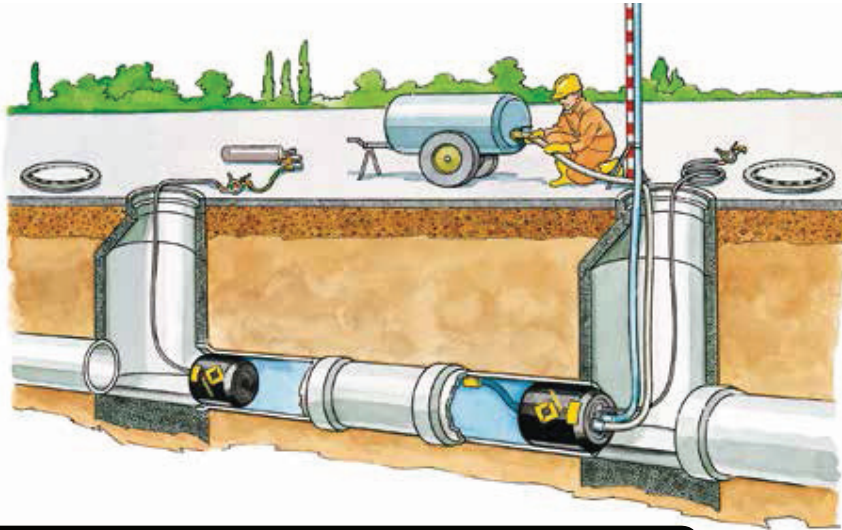
Sets 1.5 bar + Sets 0.5 bar

For pipes 500 - 2,000 mm			500 - 1.000	600 - 1.200	800 - 1.400	1.400 - 1.700	1.700 - 2.000
RDK 50/100	1480000801	1.5 bar (21.75 psi)	1				
PDK 50/100 with duct 1 x 2" OT	1481003501	1.5 bar (21.75 psi)	1				
RDK 60/120	1480001901	1.5 bar (21.75 psi)		1			
PDK 60/120 with duct 1 x 2" OT	1481009501	1.5 bar (21.75 psi)		1			
RDK 80/140	1480006000	1.5 bar (21.75 psi)			1		
PDK 80/140 with duct 1 x 2" OT	1481024000	1.5 bar (21.75 psi)			1		
RDK 140/170	1400000300	0.5 bar (7.25 psi)				1	
PDK 140/170 with duct 1 x 2" OT	1401000400	0.5 bar (7.25 psi)				1	
RDK 170/200	1400000100	0.5 bar (7.25 psi)					1
PDK 170/200 with duct 1 x 2" OT	1401000700	0.5 bar (7.25 psi)					1
Compressed air adapter							
Comp. air adapter 2" IT	1481023400		1	1	1	1	1
Accessories for inflation							
Inflation hose, 10 m (32 ft.), yellow	1600029900	1.5 bar (21.75 psi)	2	2	2		
Single fitting controller	0150005401	1.5 bar (21.75 psi)	1	1	1		
Inflation hose, 10 m (32 ft.), yellow	0050001801	0.5 bar (7.25 psi)				4	4
Dual fitting controller	0050000801	0.5 bar (7.25 psi)				2	2
Additional accessories as an option							
Inflation and safety hose 10 m (32 ft.), yellow	1700009001	0,3 bar (4.35 psi)	1	1	1	1	1
Measurement hose 10 m (32 ft.) (self-monitoring)	1700010301	0,3 bar (4.35 psi)	1	1	1	1	1

Water pressure testing - Round profile

Sets 2.5 bar (36.25 psi)

For pipes 70 - 1,000 mm (2.7 - 40 inch)				70 - 150	100 - 200	150 - 300	200 - 400	200 - 500	300 - 600	500 - 800	600 - 1.000
PDK 7/15 with duct 1 x 1/2" OT	1441001201	2.5 bar (36.25 psi)	2								
PDK 10/20 with duct 1 x 1/2" OT	1441018501	2.5 bar (36.25 psi)		2							
RDK 15/30	1440000601	2.5 bar (36.25 psi)			1						
PDK 15/30 with duct 1 x 1/2" OT	1441022700	2.5 bar (36.25 psi)			1						
RDK 20/40	1440020100	2.5 bar (36.25 psi)				1					
PDK 20/40 with duct 1 x 1" OT	1441040300	2.5 bar (36.25 psi)				1					
RDK 20/50	1440016700	2.5 bar (36.25 psi)					1				
PDK 20/50 with duct 1 x 1" OT	1441031100	2.5 bar (36.25 psi)					1				
RDK 30/60	1440000801	2.5 bar (36.25 psi)						1			
PDK 30/60 with duct 1 x 1" OT	1441023100	2.5 bar (36.25 psi)						1			
RDK 50/80	1440020000	2.5 bar (36.25 psi)							1		
PDK 50/80 with duct 1 x 2" OT	1441003800	2.5 bar (36.25 psi)							1		
RDK 60/100	1440011900	2.5 bar (36.25 psi)									1
PDK 60/100 with duct 1 x 2" OT	1441023300	2.5 bar (36.25 psi)									1
Accessories for inflation											
Inflation hose, 10 m (32 ft.), yellow	1600029900	2.5 bar (36.25 psi)	2	2	2	2	2	2	2	2	2
Single fitting controller	0250005701	2.5 bar (36.25 psi)	1	1	1	1	1	1	1	1	1
Additional accessories as an option											
D-Fixed coupling 1/2" IT	1700007600		2		2						
D-Fixed coupling 1" IT	1700016000			2		2	2	2			
C-Fixed coupling 2" IT	1700007700								2	2	
D-Blind coupling with chain	1700016200		2	2	2	2	2	2			
C-Blind coupling with chain	1700016600								2	2	
Ventilation float hose 1/2	0250004400		1		1						
Ventilation float hose 1	1700038400			1		1	1	1			
Ventilation float hose 2	1700011900								1	1	
Testing & measurement hose	1700008400	Size D	1	1	1	1	1	1			
Testing & measurement hose	1700013700	Size C							1	1	
Blocking valve	1700013200	Size D	1	1	1	1	1	1			
Blocking valve	1700007900	Size C							1	1	



Sets 1.5 bar (21.75 psi) + Sets 0.5 bar (7.25 psi)

For pipes 500 - 2,000 mm (20 - 80 inch)			500 - 1.000	600 - 1.200	800 - 1.400	1.400 - 1.700	1.700 - 2.000
RDK 50/100	1480000801	1.5 bar (21.75 psi)	1				
PDK 50/100 with duct 1 x 2" OT	1481023800	1.5 bar (21.75 psi)	1				
RDK 60/120	1480001901	1.5 bar (21.75 psi)		1			
PDK 60/120 with duct 1 x 2" OT	1481009301	1.5 bar (21.75 psi)		1			
RDK 80/140	1480006000	1.5 bar (21.75 psi)			1		
PDK 80/140 with duct 1 x 2" OT	1481023900	1.5 bar (21.75 psi)			1		
RDK 140/170	1400000300	0.5 bar (21.75 psi)				1	
PDK 140/170 with duct 1 x 2" OT	1401000300	0.5 bar (21.75 psi)				1	
RDK 170/200	1400000100	0.5 bar (7.25 psi)					1
PDK 170/200 with duct 1 x 2" OT	1401000600	0.5 bar (7.25 psi)					1
Accessories for inflation							
Inflation hose, 10 m (32 ft.), yellow	1600029900	1.5 bar (21.75 psi)	2	2	2		
Single fitting controller	0150005401	1.5 bar (21.75 psi)	1	1	1		
Inflation hose, 10 m (32 ft.), yellow	0050001801	0.5 bar (7.25 psi)				4	4
Dual fitting controller	0050000801	0.5 bar (7.25 psi)				2	2
Additional accessories as an option							
C-Fixed coupling 2 IT	1700007700		2	2	2	2	2
C-Blind coupling with chain	1700016600		2	2	2	2	2
Ventilation float hose 2	1700011900		1	1	1	1	1
Testing & measurement hose	1700013700	Size C	1	1	1	1	1
Blocking valve	1700007900	Size C	1	1	1	1	1